

## OVERSIZED ILLUSTRATIVE MATERIAL SAMPLE

This document is designed to supplement the Oversized Illustrative Material handout. It is not an example of a thesis or dissertation in its entirety. The page numbers start on page 11, emphasizing that this is only a section of a document. Each figure is separated by a page of text enabling you to have a feel for how these figures fit within the document.

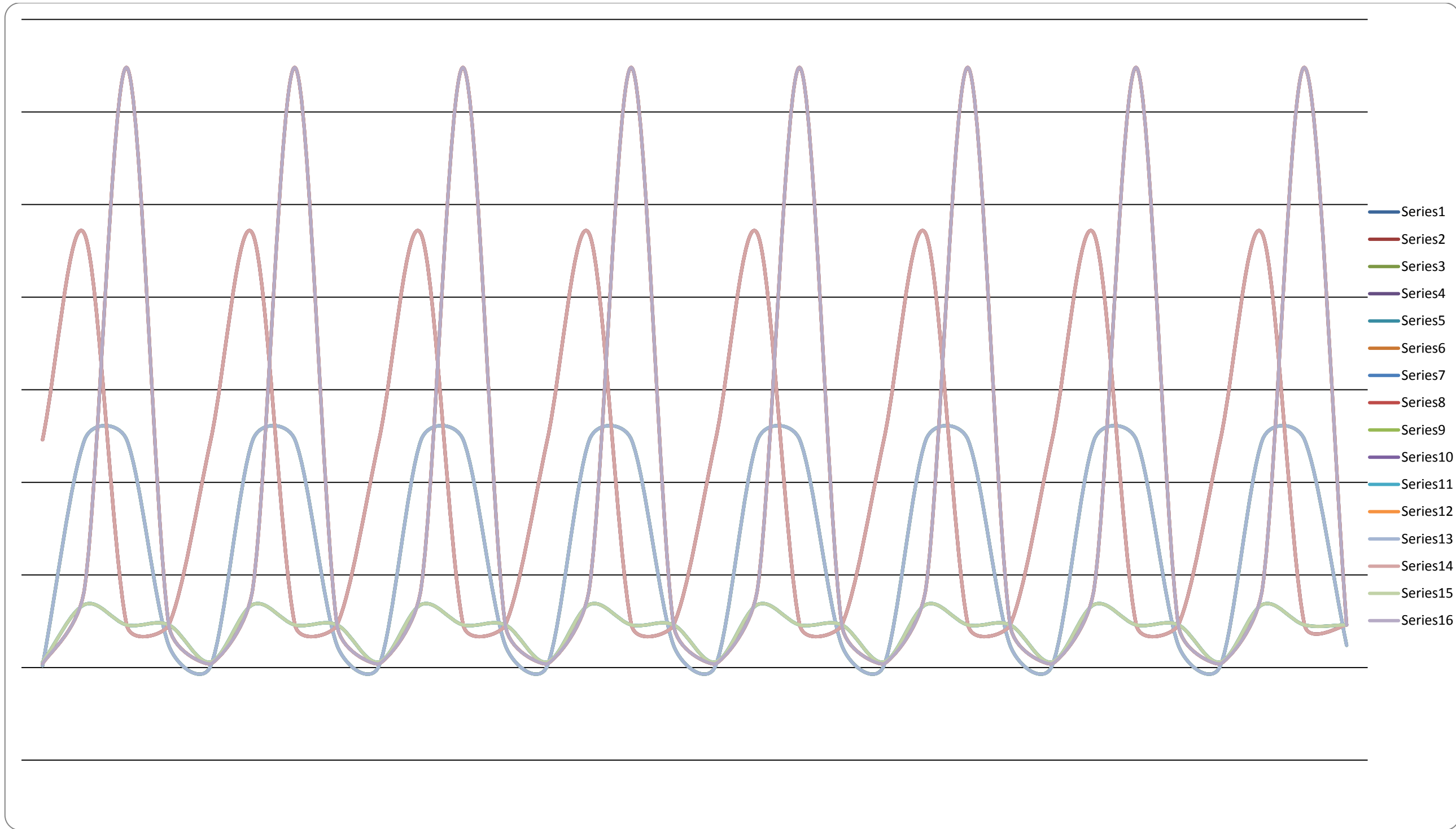
The second and fourth pages are oversized figures. The first figure, (Figure 1), illustrates how a horizontal figure should be placed. This is the simplest form of oversized figure. In order to create this document in this format, you will need to create a section break, change the paper layout to the correct size, change the paper orientation to landscape and insert your figure or table. Notice, the figure title is along the bottom, underneath the image, and the page number is at the bottom center of the document.

The second figure, (Figure 2), is an example of a vertically placed image (taller than it is wide). In this case, it is necessary to choose landscape paper orientation, add a section break, change the paper size and rotate the image 90 degrees to the left. The figure title has to be aligned under the image in the direction of the image. Therefore, you need to insert a text box under the image. Change the boundaries of the text box to be invisible, insert the text and rotate the text so that it is in line with the image. The page number should not need to be changed. It should be at the bottom center when looking at the page with the binding edge at the left.

For both examples, the margins for the pages should follow the same guidelines as the other margins throughout your document. The left margin should be set to 1.4"; the right margin should be set to 1.15"; the top and bottom margins should be set to 1.25". The margin on the left is required to be larger to account for the binding. The document will be bound on the left side of the page, for both portrait and landscape paper orientation. Remember, when working with

Note: Top Margin needs to be set to 1.25".

Note: This is the binding edge. The left margin needs to be set to 1.4".



Note: The right margin needs to be set to 1.15".

Figure 1 Oversized Landscape Example.

Note: Bottom Margin needs to be set to 1.25".

rotated images, the binding will be on the left hand side when the paper is in landscape orientation.

If you have any further questions, please consult the Oversized Illustrative Material handout or contact Thesis and Dissertation Services for assistance.

Note: This is the binding edge. The left margin needs to be set to 1.4".

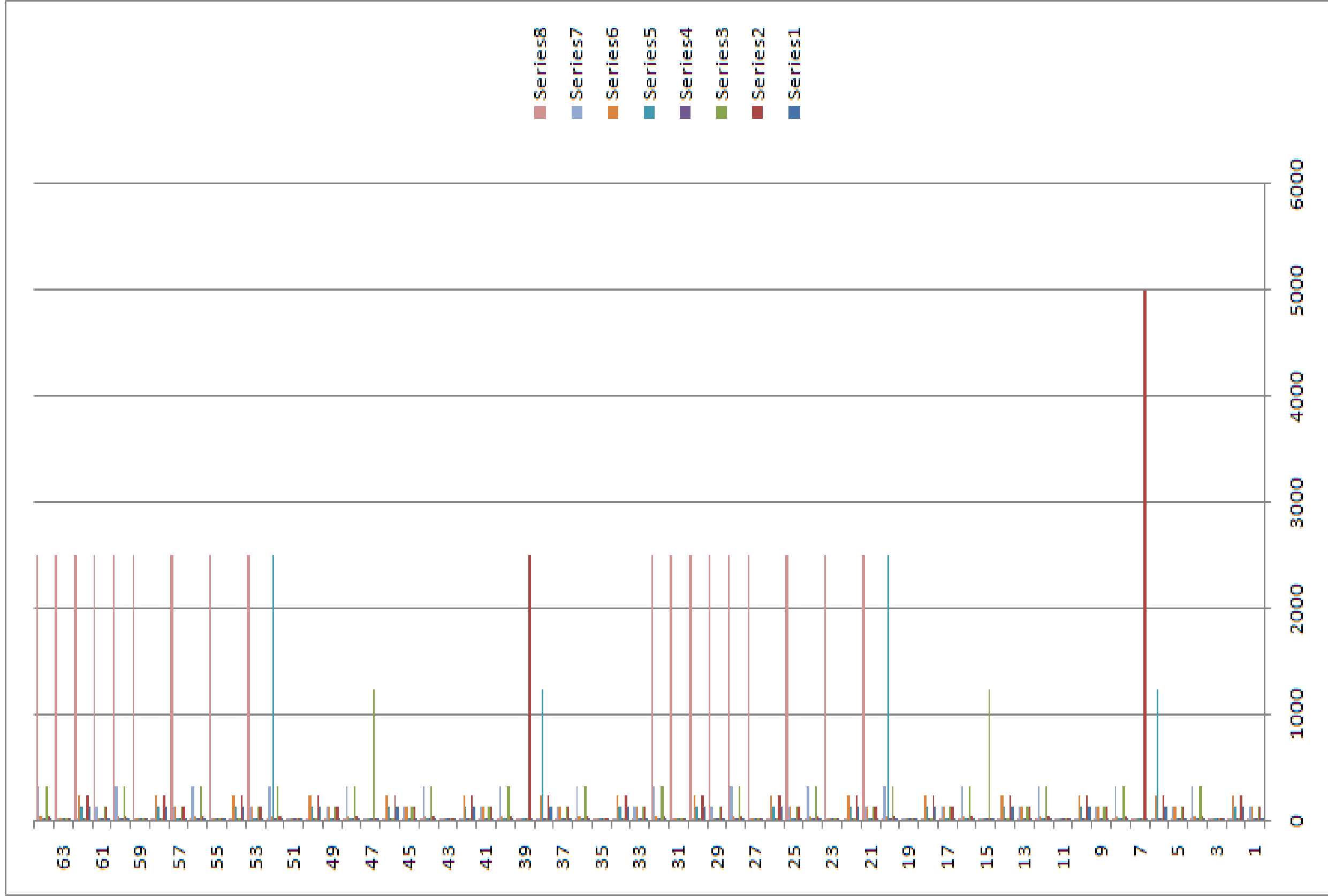


Figure 2. Oversized vertical landscape figure.

Note: The right margin needs to be set to 1.15".